

+Date:	Monday, 12 August 2024	Time:	20:05 hrs
Subject:	Bulletin No. 01	Document No.:	1.1
From:	Clerk of the Course		
To:	All Competitors		
Number of pages: 3 + 14		Attachments: [3]	

1. AMENDMENTS TO THE SUPPLEMENTARY REGULATIONS

Art. 1.3 OVERALL SS AND TOTAL DISTANCE OF THE RALLY

Total Special Stage Distance	140,26 km 139,53 km
Total Rally Distance	667,81 km 644,25 km
Number of Special Stages	12
Number of Sections	4
Number of Legs	2

Art. 3.2 PROGRAMME DURING THE RALLY WEEK

20:15 – 19:15	Publication of Provisional Classification	Official Notice board
--------------------------	---	-----------------------

Art. 9.2 RALLY-SAFETY-TRACKING-SYSTEM

All reconnaissance cars must be equipped with a GPS safety tracking device. Details of mounting and a user's guide will be published ~~at the latest in the Rally Guide on Tuesday 13.8.2024 at 21:00~~ **in a Bulletin.**

Art. 11.5 INSTALLATION OF SAFETY TRACKING SYSTEM

Either a 12V power feed from the car or a female USB type-A power socket for 5V current will be required for installation. The details of installation of the Safety tracking system will be specified in a Bulletin ~~and in the Rally Guide, which will be published on Tuesday 13.8.2024 at 21:00 on event website (& SPORTITY).~~

Art. 12.7.1 New timecards will be issued to the Competitors at the following time controls:

TC 0, ~~TC 3B,~~ **TC 3D,** TC 6D and ~~TC 9B~~ **TC 9D.**

APPENDIX 1. ITINERARY

Amended rally itinerary, see Appendix 1. (2 pages)

2. REQUEST FOR A WAIVER TO THE FIA EHRC SPORTING REGULATIONS 2024

Art. 63.2 of FIA EHRC Sporting Regulations – PERSONNEL ALLOWED IN THE PARC FERME.

To enable sufficient time for competitors to reach their vehicle in Parc Ferme (located at the top of a multi storey car park so stairs must be climbed), the FIA approves a waiver request from the organisers to allow competitors to enter Parc Ferme **15 minutes before their due time to restart.** All other Parc Ferme procedures in the Sporting Regulations remain unchanged.

3. DETAILED TIMETABLE FOR SCRUTINEERING

Detailed timetable for scrutineering, see Appendix 2 (1 page)

4. DETAILS OF INSTALLATION OF THE SAFETY TRACKING SYSTEM

Details of installation of the safety tracking system, see Appendix 3 (11 pages)

Unofficial translation – epävirallinen suomennos:

1. MUUTOKSET KILPAILUN SÄÄNTÖIHIN

Art. 1.3 RALLIN ERIKOISKOKEIDEN JA REITIN KOKONAISPITUUDET

Erikoiskokeiden yhteispituus	140,26 km 139,53 km
Koko rallin reitin pituus	667,81 km 644,25 km
Erikoiskokeiden määrä	12
Kilpailun jaksojen määrä	4
Kilpailun osien määrä	2

Art. 3.2 OHJELMA RALLIVIIKON AIKANA

20:15 – 19:15	Kilpailun epäviralliset tulokset julkaistaan.	Virallinen ilmoitustaulu Sportity app
---------------------------------	---	--

Art. 9.2 RALLIN TURVALLISUUSSEURANTAJÄRJESTELMÄ

Kaikki ennakkotututumisautot varustetaan GPS-turvaseurantalaitteella. Asennuksen yksityiskohdat ja käyttöohje julkaistaan viimeistään tiistaina 13.8.2024 klo 21:00 kilpailijaohjeessa **lisämääräyksessä**.

Art. 11.5 TURVASEURANTAJÄRJESTELMÄN ASENTAMINEN

Seurantajärjestelmän asennuksessa tarvitaan joko 12 V virransyöttö autosta tai naarastyypinen A-USB-virtapistoke 5 V virralle. Turvallisuusseurantajärjestelmän asennuksen yksityiskohdat kerrotaan lisämääräyksessä ja kilpailijaohjeessa, joka julkaistaan tiistaina 13.8.2024 klo 21:00 kilpailun virallisella sähköisellä ilmoitustaululla (ja SPORTITYssä).

Art 12.7.1 Kilpailijoille annetaan uudet aikakortit seuraavilla aikatarkastusasemilla:
TC 0, ~~TC 3B~~, **TC 3D**, TC 6D and ~~TC 9B~~ **TC 9D**.

LIITE 1. REITIAIKATAULU

Muutettu reittiaikataulu, katso Liite 1. (2 sivua)

2. POIKKEAMISPYYNTÖ FIA EHRC SPORTING 2024 -SÄÄNNÖISTÄ

Art. 63.2 FIA EHRC Sporting Säännöissä – PARC FERMESSÄ SALLITTU HENKILÖSTÖ.

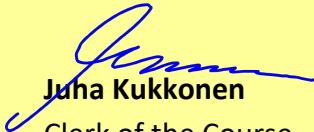
Jotta kilpailijoille jää riittävästi aikaa päästä ajoneuvonsa luokse Parc Fermessä (sijaitsee monikerroksisen pysäköintialueen yläosassa, jonne on portaita kiivettävänä), FIA hyväksyy järjestäjien sääntöpoikkeamispyynnön, jonka mukaan kilpailijat pääsevät Parc Fermeen **15 minuuttia ennen omaa kilpailun osan 2 lähtöaikaa**. Kaikki muut EHRC Sporting-säännöissä mainitut Parc Ferme -menettelyt pysyvät ennallaan.

3. YKSITYSKOHTAINEN TURVALLISUUSTARKASTUKSEN AIKATAULU

Turvallisuustarkastuksen yksityiskohtainen aikataulu, katso Liite 2 (1 sivu)

4. TURVASEURANTAJÄRJESTELMÄN ASENTAMISOHJEET

Yksityiskohtaiset turvaseurantajärjestelmän asennusohjeet, katso Liite 3 (11 sivua). Epävirallinen suomennos ohjeesta löytyy Sportitystä.



Juhana Kukkonen

Clerk of the Course

Kilpailunjohtaja

Lahti Historic Rally 2024

ASN Approval:

Via email, date 13.8.2024

AKK Motorsport ry

Henrik Frank

FIA Approval:

Via email, date 13.8.2024

FIA

Jamie Edwards

RALLY ITINERARY - KILPAILUAIKATAULU

FRIDAY 23TH AUGUST 2024 - LEG 1 (SECTION 1 + 2)

		Sunrise 05:48			Sunset 20:50		
TC	SS	Location	SS distance	Liaison distance	Total distance	Target time	1 st car due
0		CEREMONIAL START - START LEG 1					10:01
		Distance to next refuel - Matkakeidas Vierumäki	(10,93)	(51,90)	(62,83)		
1			-	35,03	35,03	0:50	10:51
SS 1		OJASSUO 1 - MATKAKEIDAS	10,93	-	-		10:54
RZ 1		Refuel - Matkakeidas Vierumäki / FIA refuel area	(16,87)				
		Remote service zone					
		Distance to next refuel - Matkakeidas Hollola	(23,37)	(74,08)	(97,45)		
2			-	25,95	36,88	0:57	11:51
SS 2		URAJÄRVI 1 - AUTOSALPA	10,45	-	-	-	11:54
3			-	31,93	42,38	0:55	12:49
SS 3		YLÄNNE 1 - HAKEYHTYMÄ KANKAANMÄKI	12,92	-	-		12:52
RZ 2		Refuel - Matkakeidas Hollola / FIA refuel area (Remote service prohibited)	(33,07)				
		Distance to next refuel - Matkakeidas Vierumäki	(10,93)	(59,81)	(70,74)		
3 A		REGROUP IN	-	41,72	54,64	1:15	14:07
		REGROUP (3-15 MIN)	-	-	-	0:15	
3 B		REGROUP OUT					14:22
		TECHNICAL ZONE				0:03	
3 C		SERVICE A IN					14:25
		SERVICE A - (Lahti Harbour)	-	-	-	0:40	
3 D		SERVICE A OUT	-	-	-	-	15:05
4			-	34,66	34,66	0:50	15:55
SS 4		OJASSUO 2 - MATKAKIEDAS	10,93	-	-	-	15:58
RZ 3		Refuel - Matkakeidas Vierumäki / FIA refuel area	(16,50)				
		Remote service zone					
		Distance to next refuel - Matkakeidas Hollola	(23,37)	(74,45)	(97,82)		
5			-	25,95	36,88	0:57	16:55
SS 5		URAJÄRVI 2 - AUTOSALPA	10,45	-	-	-	16:58
6			-	31,93	42,38	0:55	17:53
SS 6		YLÄNNE 2 HAKEYHTYMÄ KANKAANMÄKI	12,92	-	-	-	17:56
RZ 4		Refuel - Matkakeidas Hollola / FIA refuel area (Remote service prohibited)	(33,07)				
		Distance to next refuel - Shell Express, Lahti; Sat 24.08.2024	-	(18,96)	(18,96)		
6 A		SERVICE B IN (Permitted early check-in)	-	41,72	54,64	1:15	19:11
		SERVICE B (Lahti Harbour)				0:40	
6 B		SERVICE B OUT (Permitted early check-in)	-	-	-	-	19:51
6 C		PARC FERMÉ A IN (Permitted early check-in) - LEG 1	-	2,01	2,01	0:14	20:05
TOTAL			68,60	270,90	339,50	10:04	

SECTION 1

SECTION 2

RALLY ITINERARY - KILPAILUAIKATAULU

SATURDAY 24TH AUGUST 2024 - LEG 2 (SECTION 3 + 4)

Sunrise 05:50 Sunset 20:47

TC SS	Location	SS distance	Liaison distance	Total distance	Target time	1 st car due
6 D	PARC FERMÉ OUT - START LEG 2					8:05
	SERVICE POSSIBILITY (Service Park) No TC's					
RZ 5	Refuel - Shell Express, Lahti / FIA Refuel Area (Remote service prohibited)		(8,30)			
	Distance to next refuel - St1 Mäntsälä / FIA refuel area	(6,87)	(34,43)	(41,30)		
7		-	32,65	32,65	1:02	9:07
SS 7	HAUTJÄRVI 1 - GREENSTAR	6,87	-	-	-	9:10
RZ 6	Refuel - St1 Mäntsälä / FIA refuel area		(10,08)			
	Remote service zone - Juustoportti Mäntsälä					
	Distance to next refuel - Matkakeidas Hollola / FIA refuel area	(28,60)	(66,66)	(95,26)		
8		-	31,30	38,17	1:29	10:39
SS 8	KOUKUNMAA 1 - TRANSPORT HOSIKE	13,78	-	-	-	10:42
9		-	23,88	37,66	0:49	11:31
SS 9	MIEHOLA 1 - KOSKIKARTANO	14,82	-	-	-	11:34
RZ 7	Refuel - Matkakeidas Hollola/ FIA refuel area (Remote service prohibited)		(21,56)			
	Distance to next refuel - Shell Express Lahti / FIA refuel area	-	(14,96)	(14,96)		
9 A	REGROUP IN	-	30,23	45,05	1:12	12:46
	REGROUP (3-15 MIN)	-	-	-	0:15	
9 B	REGROUP OUT					13:01
	TECHNICAL ZONE				0:03	
9 C	SERVICE C IN					13:04
	SERVICE C (Lahti Harbour)	-	-	-	0:40	
9 D	SERVICE C OUT	-	-	-	-	13:44
RZ 8	Refuel -Shell Express, Lahti / FIA refuel area (Remote service prohibited)		(6,29)			
	Distance to next refuel - St1 Mäntsälä / FIA refuel area	(6,87)	(36,44)	(43,31)		
10		-	30,34	30,34	0:46	14:30
SS 10	HAUTJÄRVI 2 - GREENSTAR	6,87	-	-	-	14:33
RZ 10	Refuel - St1 Mäntsälä / FIA refuel area		(10,08)			
	Remote service zone - Juustoportti Mäntsälä					
	Distance to next refuel - Matkakeidas Hollola / FIA refuel area	(28,60)	(66,66)	(95,26)		
11		-	31,30	38,17	1:29	16:02
SS 11	KOUKUNMAA 2 - TRANSPORT HOSIKE	13,78	-	-	-	16:05
12		-	23,88	37,66	0:49	16:54
SS 12	MIEHOLA 2	14,82	-	-	-	16:57
RZ 11	Refuel - Matkakeidas Hollola/ FIA refuel area (Remote service prohibited)		(21,56)			
	Distance to Ceremonial Finish	-	(8,67)	(8,67)		
12 A	CEREMONIAL FINISH - FINISH LEG 2 (Permitted early check-in)	-	30,23	45,05	1:12	18:09
LEG 2 - TOTAL		70,94	233,81	304,75	10:04	

SECTION 3

SECTION 4

LAHTI HISTORIC RALLY 2024		SS distance	Liaison distance	Total distance	Total time
LEG 1 - TOTAL		68,60	270,90	339,50	10:04
LEG 2 - TOTAL		70,94	233,81	304,75	10:04
TOTAL		139,54	504,71	644,25	20:08



APPENDIX 2.

DETAILED SCRUTINEERING TIMETABLE 22.8.2024 TURVALLISUUSTARKASTUKSEN AIKATAULU 22.8.2024

Time/ Aika	Car Number/ Auton numero
16:00	101
16:03	102
16:06	103
16:09	104
16:12	105
16:15	106
16:18	107
16:21	108
16:24	109
16:27	110
16:30	111
16:33	112
16:36	113
16:39	114
16:42	115
16:45	116
16:48	117
16:51	118
16:54	119
16:57	120
17:00	121
17:03	122
17:06	123
17:09	124
17:12	125

Time/ Aika	Car Number/ Auton numero
17:15	126
17:18	127
17:21	128
17:24	129
17:27	130
17:30	131
17:33	132
17:36	133
17:39	134
17:42	135
17:45	136
17:48	137
17:51	138
17:54	139
17:57	140
18:00	141
18:03	142
18:06	143
18:09	144
18:12	145
18:15	146

1.3.2023

GPS Safety Tracking Device - Installation

We are using an app in GSM phone for safety tracking in rally events.

System requires some preparations in the rally cars before rally starts. These are described below. Should you have any questions, we are happy to help.

With the system we will have better communication facilities between rally control centre and the rally cars in case of any accidents, as well as a more secure communication channel between the cars and the rally control centre

Charging Power

App works only if GSM display is on. This uses GSM battery a lot, so it's very important to charge phone while using app. There is two available opportunity to charge phone.

- 1. 5V:** Car must have a female USB type-A power socket for 5V current. The socket must be within 80 cm of the planned installation location of the device. The connection may be part of the car's main circuit, so that when the main power is switched off it will not be discharging the battery e.g. in overnight parc fermé.
- 2. 12V:** You have to use GSM holder where is permanently installed converter from 12v to 5v. From this converter will come a permanently installed wire (USB type-A) 80-100cm which has to connect to female power socket 12V current USB type-A. GSM phone is connect to the holder converter for charging

Attaching the device to the car

The device must be installed in the car with the equipment described in the following pictures. It is an absolute must that the device will be place so that:

- both the driver and the co-driver can reach the touch screen without opening safety belts
- both the driver and the co-driver can see the screen when driving on special stage

Device

Tracking will be operated by mobile application, which is installed to the mobile phone. Instructions for application are included to these instructions.



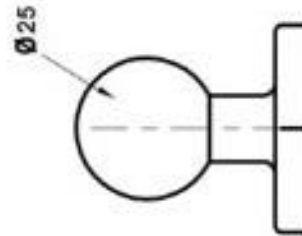
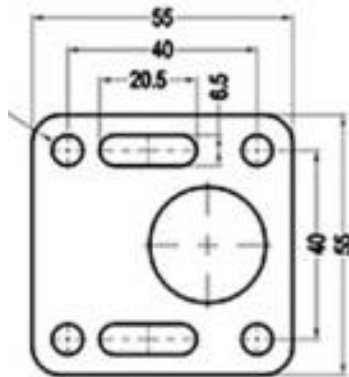


Installation Equipment

The device will be installed with the RAM Mount ball. This ball mount must be attached to the car with solid screws, in a place as instructed above, in order for the drivers to be able to use the device. The installation measurements for the base of the ball can be seen here. Screw hole diameter is 6.5 mm and distance between the holes 40 mm.

The RAM Mount 25 mm ball base can be bought. Ask from the rally office.

Price 10€



The GSM holder and phone is attached to the ball with the double socket arm.



Holder version 1. 5V

Phone, holder charging cable and mounting device.

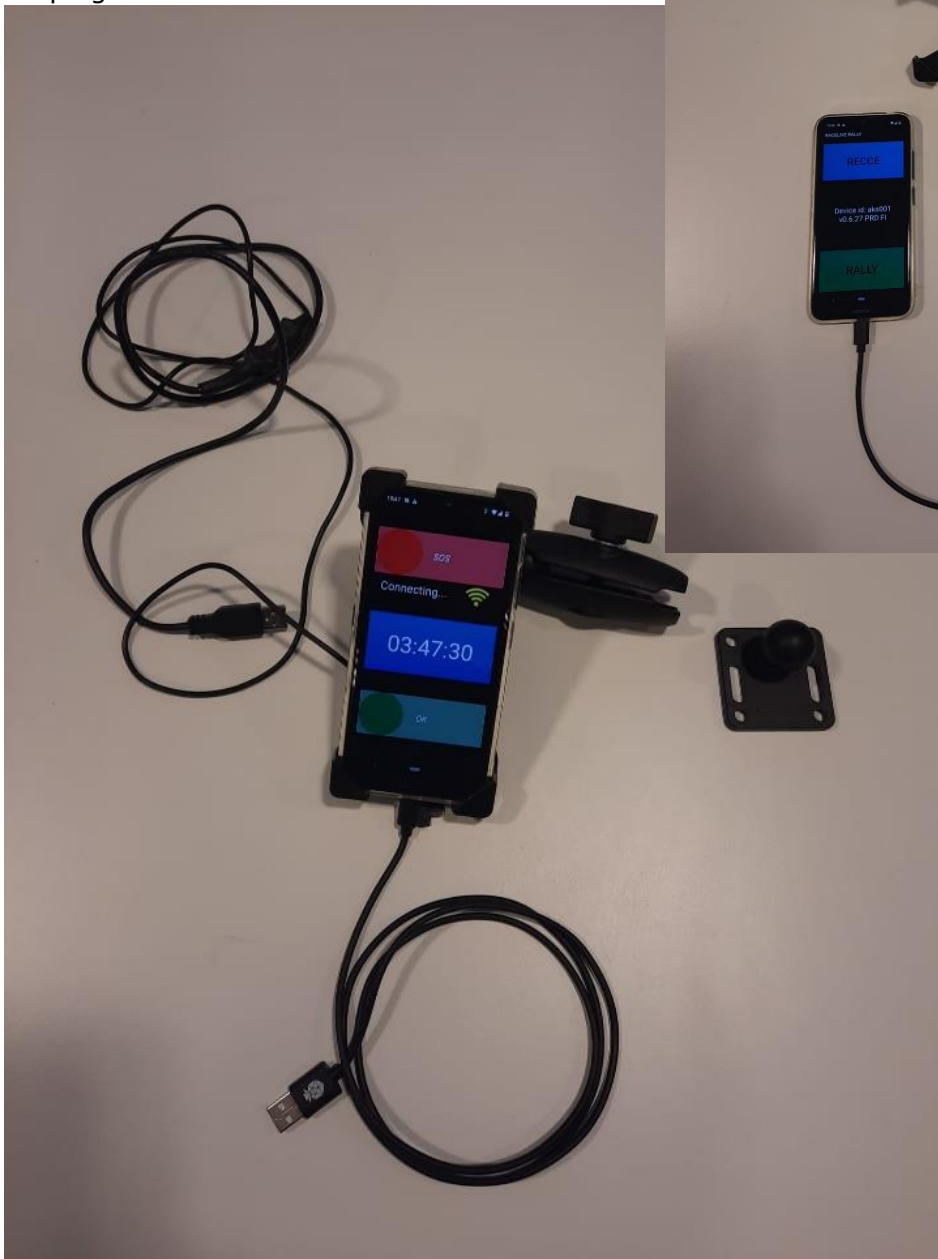




Holder version 2. 12v

Phone, wired holder, charging cable and mounting device.

In this device, there is included usb-converter, which allows connection directly to 12V system. Charging cable will be attached to this converter, and cable from the holder will be attached to cars power plug.

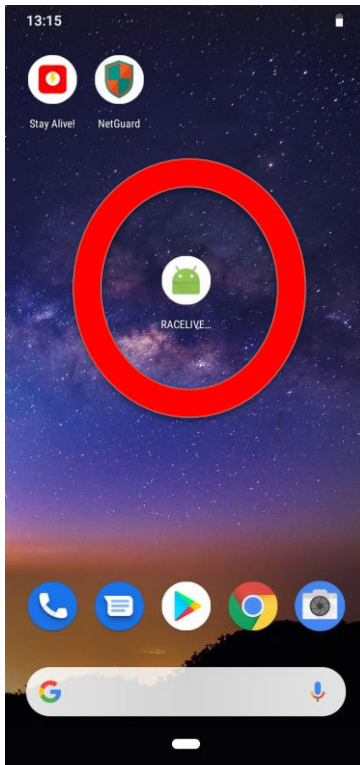




GPS Safety Tracking - User's Manual

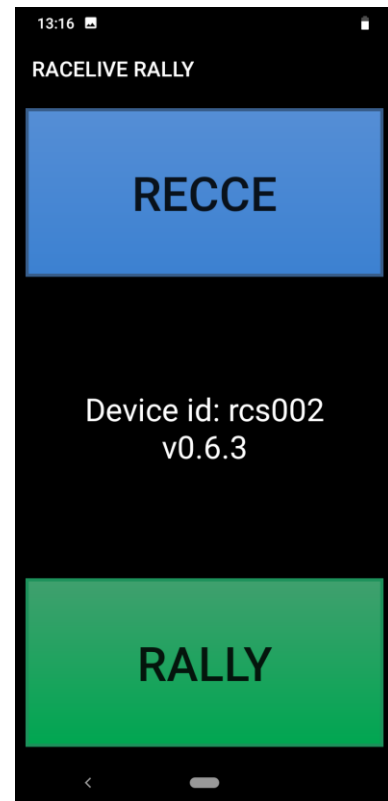
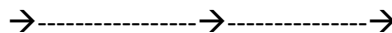
In FRC events all cars will be equipped with a GPS safety tracking device, run by AKK Sports with Traxmeet. Tracking is done using the equipment and the installed application. Below you can find the main features and operation instructions, installation instructions have been given separately

Opening Screen



When the device opens, start the Racelive application from the icon circled with red in the picture.

You may need to swipe to the left to access this desktop page.



When the application opens, you choose reconnaissance tracking (RECCE) or (RALLY) tracking.



Reconnaissance Tracking

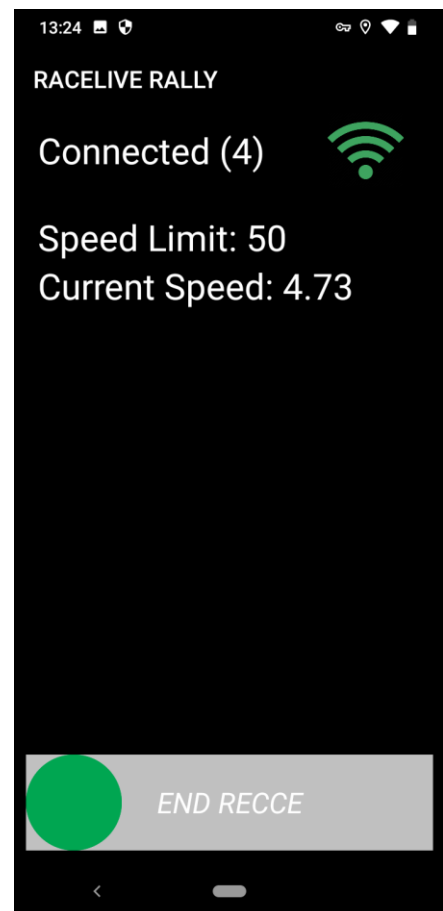


If you press **RECCE** on the start screen, the view pictured on the left will open, as the device is searching for connection.

Please place the device so, that the screen is visible and possible received message could be seen easily.

Keep the screen always ON!

Keep the device all the time at charger, so that it won't run out of battery during the event!



Once connected, the device will show a possible speed limit set by the organiser for a certain area (e.g. a special stage) and the your current speed

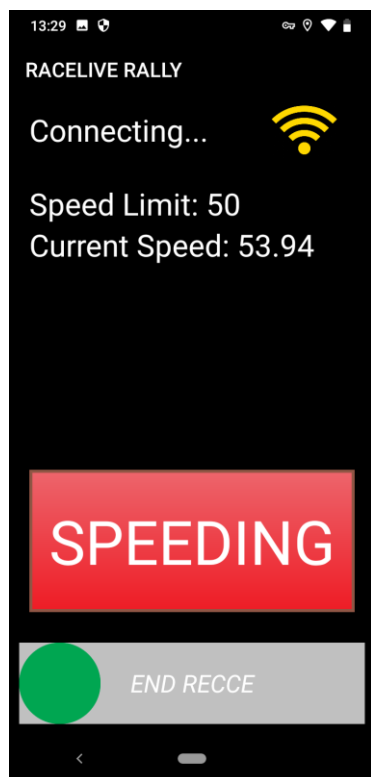
All competitor movement within special stage areas will be registered in the application database and can be used afterwards to monitor speeds etc.

Once you finish reconnaissance, you can stop the tracking application by gliding the green dot at the bottom of the screen to the right.

Close the screen during the night, or when finishing reconnaissance to spare battery.



Reconnaissance Tracking continued...



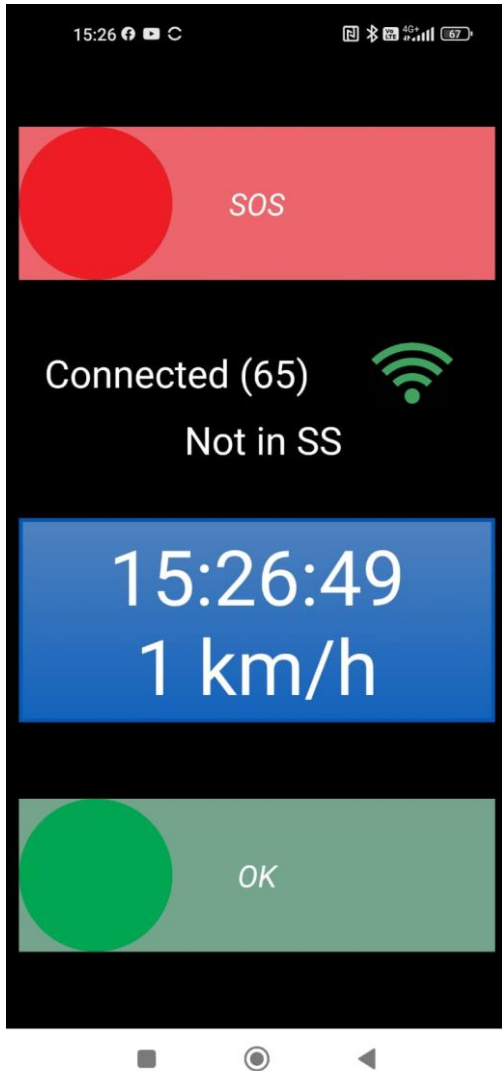
Should you go over the speed limit set by the organiser, the device will show this to the drivers (**SPEEDING**). The device will not show any speed limits set by the road authorities.

Any speeding will be stored in the application database.



Rally Tracking

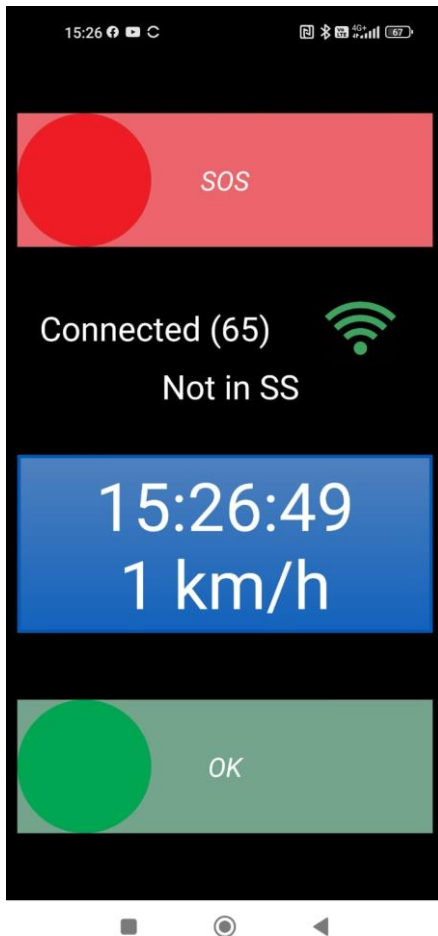
When you have chosen **RALLY** tracking from the start screen, the view pictured on the right will open to the screen, as the device is searching for connection.



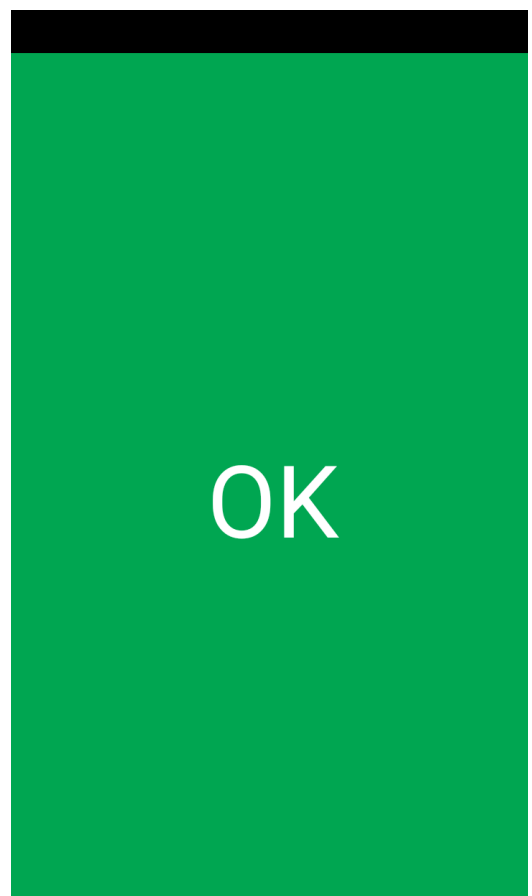
Once connected, the device will show the basic status with OK and SOS buttons, and the connection confirmation.



Rally Tracking continued...



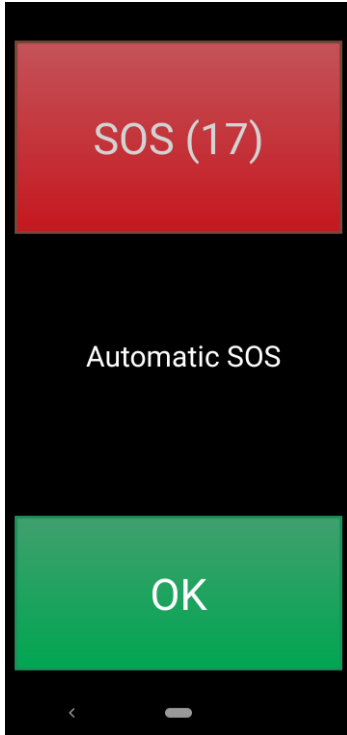
If you need to stop on stage to change a tyre or something, but there is no need for medical or fire assistance, not any danger to the surrounds, you must press OK and slide the ball on the basic status screen out of the screen to the right.



When OK is pressed, the screen goes green. It will automatically return to basic status after approx. 5 seconds after pressing the OK and the message having gone through to the system.



Accidents - SOS



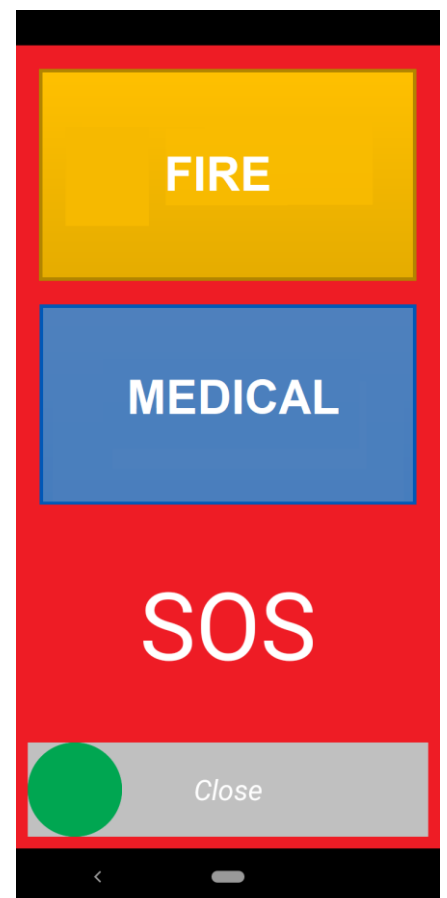
If you stop during the rally e.g. to change a tyre, the device will automatically start an SOS alarm in about 20 seconds. This option won't be active at road sections!

The time before the alarm is made can be seen on the SOS button (17 seconds remaining on the sample screen). It takes about 40 seconds from the moment of stopping to the time of sending the SOS.

You can dismiss the automatic SOS before it is sent by pressing OK.

The Auto-SOS re-activates once the car is moving again at a minimum speed of 60 kph at the special stage.

It will help the workload of the Rally Control significantly, if when stopping on a stage, you could press the OK before the alarm is sent off. Should the alarm be sent, the device will go back to basic status.



Should the alarm be sent, the device will go back to basic status.

Should a competitor have an accident where help is needed, he needs to press the SOS button on the RALLY screen.
(slide the SOS ball on the basic status screen out of the screen to the right.)

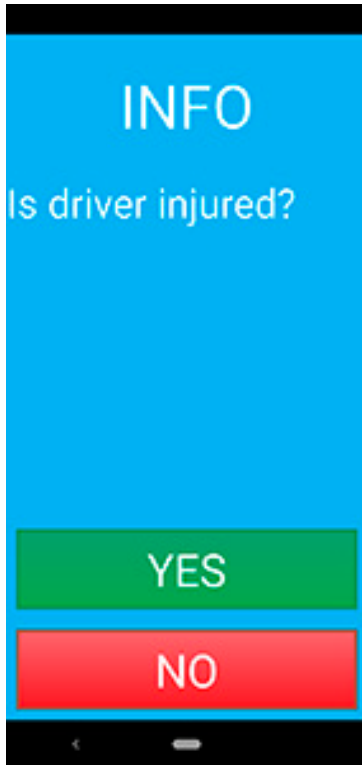
Pressing the SOS button will take the application to the mode seen on the right, with three options for the user:

1. Confirm the alarm and ask for extinguishing assistance by pressing FIRE.
2. Confirm the alarm and ask for medical assistance by pressing MEDICAL.
3. Cancel the alarm by sliding the green dot to the right.

After pressing FIRE/MEDICAL the button will flash for a while and the device will return to basic status.



Accidents - Communication



The Rally Control has an option to communicate with the car, e.g. to get more information on the seriousness of an accident, number of patients or their condition.

The screen will then show the INFO text, the question underneath and the answer options

YES

NO

The drivers must answer accordingly. There may be multiple questions following one after the other.

Accidents - Red Flag

The application is equipped with an option for the Rally Control to send a Red Flag notification and thus stop the stage for these cars, e.g. in case of accident, road block or other reason.

When getting a red flag on the device screen, the competitor must confirm that he has seen the red flag by pressing it OK on the device screen, and after that slow down the speed and as well prepare to stop at a special stage checkpoint or at the place of the accident for further instructions.

Red flag notification will be remove from screen by rally control in somepoint after SS

